

# SELFSCAPE



Museo dei Bambini L'Aquila

SOLO EXHIBITION  
BY  
**ÇİMEN  
BAYBURTLU**

Accademia L'Aquila Belle Arti

**1 - 5 April  
2014**

Curated by Lea CONTESTABILE



MARMARA UNIVERSITY  
INTERNATIONAL OFFICE



Ministero dell'Istruzione, dell'Università e della Ricerca  
ACCADEMIA DI BELLE ARTI, L'AQUILA



ERASMUS



ERASMUS





**ACCADEMIA DI BELLE ARTI L'AOUILA**

Via Leonardo da Vinci - 67100 L'Aquila Tel. 0862/317360-80 Fax 0862/317370

Ufficio Relazioni Internazionali - International Relations Office

*E-mail:* [uri@accademiabellearti.laquila.it](mailto:uri@accademiabellearti.laquila.it); *Internet:*  
[www.accademiabellearti.laquila.it](http://www.accademiabellearti.laquila.it)

Dear Çimen Bayburtlu,

I am happy to inform you that your solo exhibition entitled “Selfscape” has been accepted into our museum. Many thanks indeed for your valuable contribution to our collection.

I wish you continued success with your art and academic career.

Yours sincerely

Frank J. Lees



# SELFSCAPE



Museo dei Bambini L'Aquila



Ministero dell'Istruzione, dell'Università e della Ricerca  
ACCADEMIA DI BELLE ARTI, L'AQUILA



SOLO EXHIBITION  
BY

CİMEN  
BAYBURTLU



MARMARA UNIVERSITY  
INTERNATIONAL OFFICE

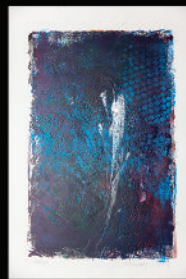
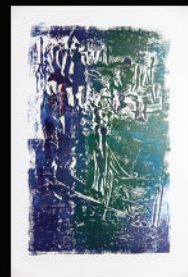
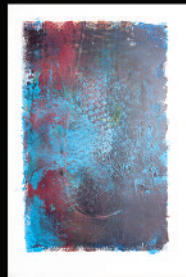
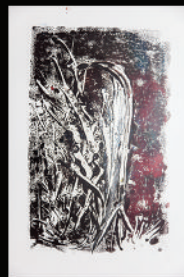
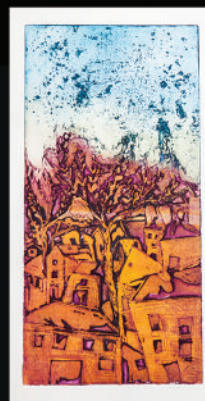


Accademia L'Aquila Belle Arti

1 - 5 April  
2014

Curated by Lea CONTESTABILE





# SELFSCAPE

is a process of self(ves)-conceptualization.

At the beginning, the serie emphasizes the difference between easy and simple by stepping over the difference between seeing and looking. A gaze through the windows gives us a whole city as a single organism but some times only trees, houses and a road.

As an analysis of another difference, next step is leaving the seen's outsideness at outside, searching the seen in the inside and investigating the distance between outside and inside.

"Taking a step forward means approaching somewhere as well as moving away from somewhere. But our minds don't allow us to grasp them at the same time. A barrier is located between them. Also, this is how a person feels like when he seeks for himself. Mentally it is not possible to walking off somewhere and going somewhere at the same time. Because what we are walking off and getting close are our selves. The mind should accept more than one "self" to pass that barrier" the artist says.

End of the process, "Selfscape" leaves questions waiting to be answered. Even the idea of "self-reflection" hasn't been solved, how can a person manage to handle many "selves"-s dead-ends? For some, human beings are born sinful, is could be why man see only his mistakes when he criticize himself? Why the man who praises himself to the others is so mean to himself by himself. Or being alone with a self makes a man so dull? Shipping from these questions "Selfscape" presents a colorful journey from Saint Augustine to Montaigne on self-criticism and self-reflection.









